

Town of Hypoluxo Building Permit

Inspection Scheduling Options: Inspection Request Forms are on the Building/Zoning page at www.hypoluxo.org then Fax: 582.0703 or Email: inspector@hypoluxo.org.

Permit

Number 13-07-137

Project

Address 132 WATERSIDE DR. BLDG. #46

Permitted

Project HURRICANE PANELS

Contractor

SUPERIOR CONCRETE

Owner

WATERSIDE H.O.A.

T. Large
Issued By

7/29/13
Date

"WARNING TO OWNER: YOUR FAILURE TO RECORD A NOTICE OF COMMENCEMENT MAY RESULT IN YOUR PAYING TWICE FOR IMPROVEMENTS TO YOUR PROPERTY. A NOTICE OF COMMENCEMENT MUST BE RECORDED AND POSTED ON THE JOB SITE BEFORE THE FIRST INSPECTION. IF YOU INTEND TO OBTAIN FINANCING, CONSULT YOUR LENDER OR AN ATTORNEY BEFORE RECORDING YOUR NOTICE OF COMMENCEMENT." F.S.713.135

HVHZ = High Velocity Hurricane Zone

FL 14078-R1 - NON-HVHZ



CIVIL • STRUCTURAL • MARINE
COASTAL • GEOTECHNICAL

www.meaengineers.com

PRODUCT EVALUATION REPORT

REPORT NO.: 11-1221-A
DATE: February 24, 2012
PRODUCT CATEGORY: Hurricane Shutters
PRODUCT SUB-CATEGORY: Products Introduced as a result of NEW TECHNOLOGY
PRODUCT NAME: CLEARTEK-INVISISHIELD - FLAT
MANUFACTURER: POLYCARBONATE PANEL- NON_HVHZ
Ultratek Worldwide Inc.
3801 N. Washington Blvd.
Sarasota, FL 34234

SCOPE OF EVALUATION:

This is a Product Evaluation Report issued by John H. Kampmann Jr., PE (FBC Org. No.: ANE2480) to Ultratek Worldwide Inc., manufacturer, in accordance with the requirements of the Florida Department of Business and Professional Regulation (Florida Building Commission), Rule Chapter No.: N-3.005, Method 1 (d).

All products listed above have been tested and/or evaluated as described herein to verify compliance with the 2010 edition of the Florida Building Code, and to verify that the product is for the purpose intended, at least equivalent to that required by the Code.

This Product Evaluation Report shall be subject to review and revision following Florida Building Code modifications or revisions.

EVIDENCE SUBMITTED:

PRODUCT EVALUATION DOCUMENTS

MEA Engineers, Inc. Drawing #11-1221-A titled "CLEARTEK-INVISISHIELD - FLAT POLYCARBONATE PANEL", Non- High Velocity Hurricane Zone, Sheets 1 - 5, prepared by John H. Kampmann Jr., PE; signed and sealed 2/24/12 by John H. Kampmann Jr., PE; Dated 12/21/11, is an integral part of this Evaluation Report.

TEST REPORTS

Uniform Static Loads per ASTM E 330-02. Test Report prepared by Architectural Testing Lab, Dated 09/08/10 for Florida State Approval. Report No.: A3398.01-401-44

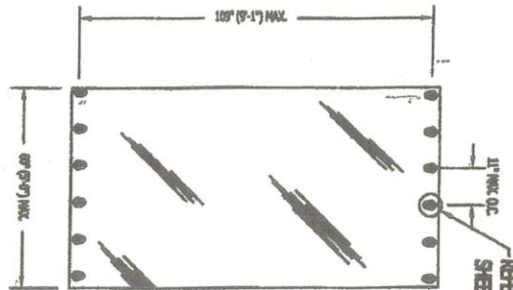
Large Missile Impact Resistance and Cyclic Loading Performance per ASTM E1886-05 and ASTM E1996-05 as per section 1609.1.4 of the Florida Building Code. Test Report prepared by, Architectural Testing Lab, Dated 09/08/10 for Florida State Approval. Report No.: A3398.01-401-44

Uniform Static Loads per ASTM E 330-02. Test Report prepared by Architectural Testing Lab, Dated 12/21/11 for Florida State Approval. Report No.: B5753.01-401-44

Large Missile Impact Resistance and Cyclic Loading Performance per ASTM E1886-05 and ASTM E1996-05 as per section 1609.1.4 of the Florida Building Code. Test Report prepared by, Architectural Testing Lab, Dated 12/21/11 for Florida State Approval. Report No.: B5753.01-401-44

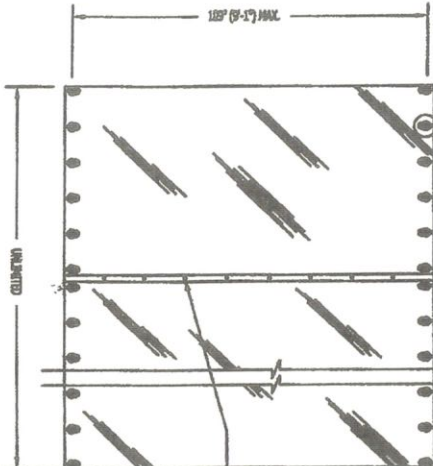
5656 LAWTON DRIVE, SARASOTA, FL 34233 **PHONE** (941) 922-3854

FAX (941) 922-9564 **EMAIL** jkammann@meaengineers.com



REFER TO SHIT. 2 OF 5 FOR ADDITIONAL DETAILS AND SHEET 5 OF 5 FOR FASTENER SPACING

TYPICAL TWO-SIDED INSTALLATION
VERTICAL OR HORIZONTAL INSTALLATION
N.T.S.

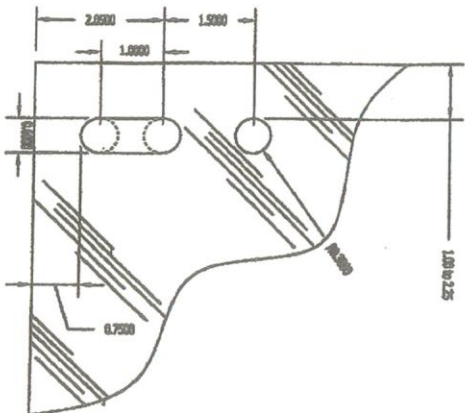


REFER TO SHIT. 2 OF 5 FOR ADDITIONAL DETAILS AND SHEET 5 OF 5 FOR FASTENER SPACING

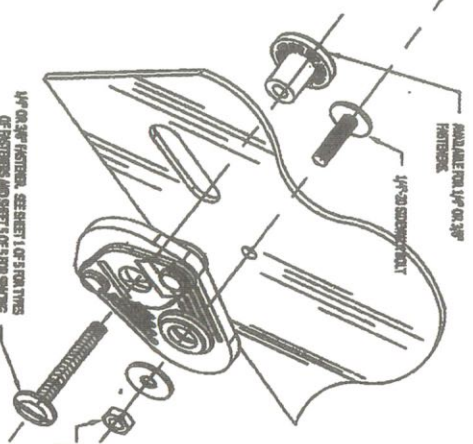
TYPICAL OVERLAP INSTALLATION
VERTICAL OR HORIZONTAL INSTALLATION
N.T.S.

- NOTE:
1. SIDE COURTESY/STRETCH BRACKETS MAY BE USED.
 2. STITCHING OR FINISHES CAN BE SUBSTITUTED BY SOLID PANELS AS LONG AS THE SPAN REQUIREMENTS ARE MET.

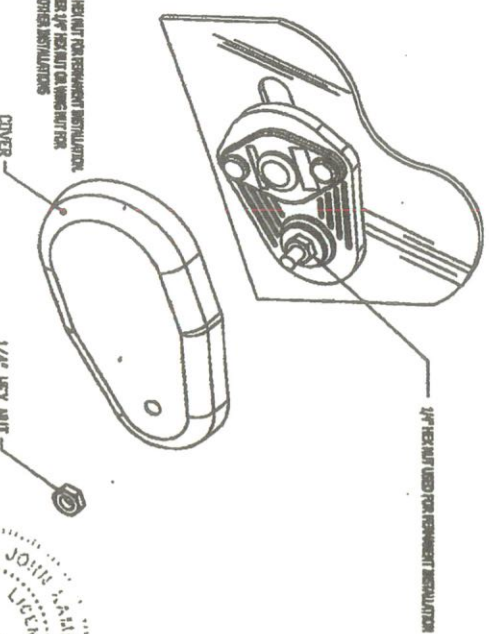
1/4\"/>



TYPICAL EDGE DETAIL
VERTICAL OR HORIZONTAL INSTALLATION
1/2\"/>



TYPICAL ATTACHMENT DETAIL
VERTICAL OR HORIZONTAL INSTALLATION
1/2\"/>



OPTIONAL COVER DETAIL
VERTICAL OR HORIZONTAL INSTALLATION
1/2\"/>



2010 FBC (NON-HIGH VELOCITY HURRICANE ZONE)

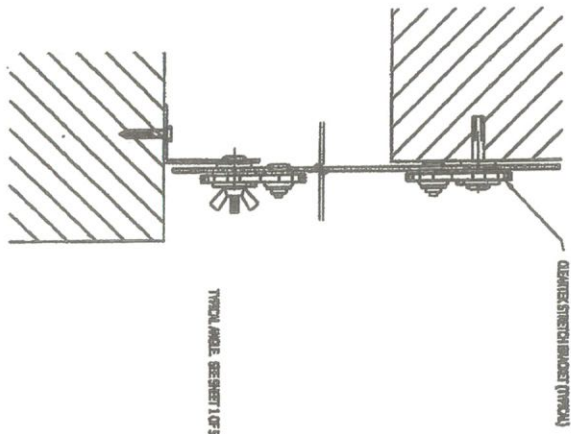
CLEARTEK-INVISISHIELD
Flat Polycarbonate Panel

Ultratek Worldwide Inc.
3881 N. Washington Blvd.
Shawnee, KS 66204
PHONE: (913) 944-2585

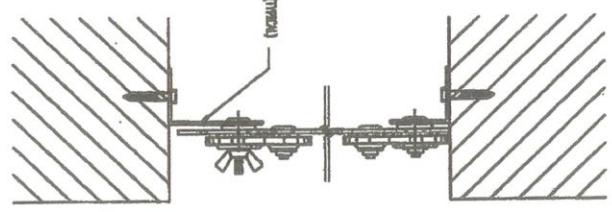
REV.	DESCRIPTION

CA #0782
WWW.MEAENGINEERS.COM
MEA
ENGINEERS, INC.
5606 Lawton Drive

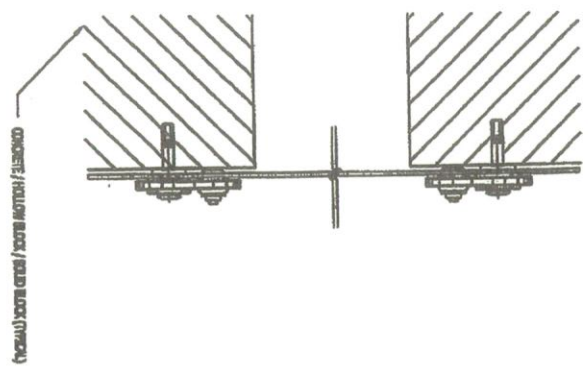
JK
11-12
N/S
12/21/
2 of 5



TRAP / DIRECT MOUNT DETAIL
INSIDE MOUNT INSTALLATION 1/2"=1'



TRAP MOUNT DETAIL
INSIDE MOUNT INSTALLATION 1/2"=1'



DIRECT MOUNT DETAIL
INSIDE MOUNT INSTALLATION 1/2"=1'

- NOTES:**
1. SEE SHEET 1 OF 5 FOR FASTENERS.
 2. SEE SHEET 3 OF 5 FOR FASTENER SPACING.
 3. SEE SHEET 2 OF 5 FOR STRUCTURAL BRACKET ATTACHMENT DETAILS.

JOHN KASIMATIAN
LICENSED PROFESSIONAL ENGINEER
No. 11918
FL. REG. NO. 47516
DATE: 2-24-12
JOHN KASIMATIAN, P.E.

2010 FBC (NON-HIGH VELOCITY HURRICANE ZONE)

JK
11-12
NTS
12/21

CLEARTEK-INVISISHIELD
Flat Polycarbonate Panel

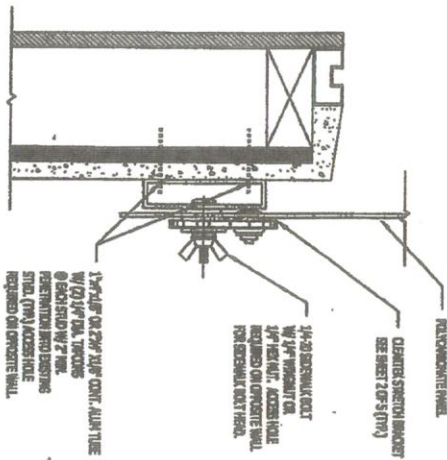
Ultratek Worldwide Inc.
3881 N. Washington Blvd.
Sarasota, FL 34234
PHONE: (941) 884-2285

REV.	DESCRIPTION

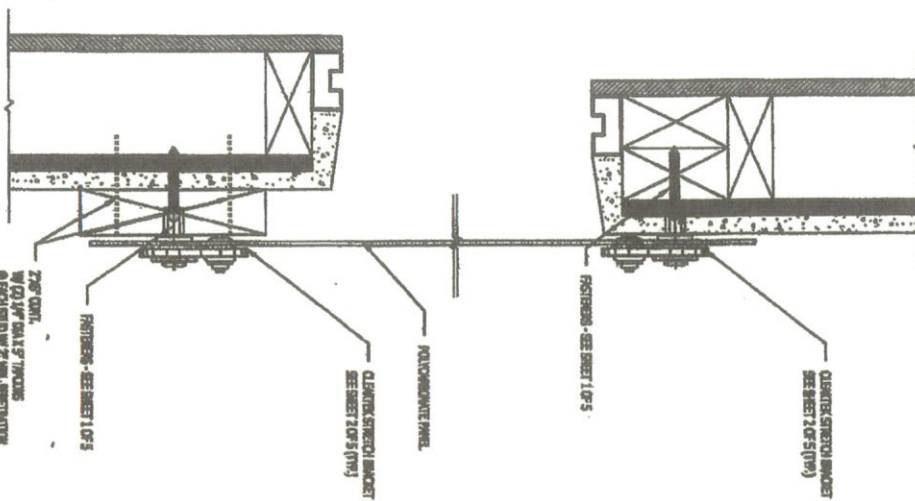
CA #6752
WWW.MEAENGINEERS.COM
MEAE
ENGINEERS, INC.
5456 Lorton Drive
Sarasota, Florida 34237

INSTALLATION DETAIL ON EXISTING WOOD STUDS

1. DETAILS SHOW CONNECTION OF Z66 BLOCK AND 1/4" ALUM. TUBE TO WOOD STUDS TO PROVIDE A CONTINUOUS SURFACE FOR SHUTTER INSTALLATION.
2. FOR INSTALLATION DETAILS OF HEADER / SILL TO CONTINUOUS WOOD MEMBERS SEE SHEET 3 OF 5.
3. THESE DETAILS MAY BE APPLIED TO CONCRETE, HOLLOW AND SOLID BLOCK STRUCTURES ALSO.



DIRECT MOUNT DETAIL
INSIDE MOUNT INSTALLATION 1/2"-1"



DIRECT MOUNT DETAIL
INSIDE MOUNT INSTALLATION 1/2"-1"

JOHN LICHTSE
47516
Professional Engineer
FL 7516
12/21/17

2010 FBC (NON-HIGH VELOCITY HURRICANE ZONE)

4 of 5
11-122
12/21/17

CLEARTEK-INVISISHIELD
Flat Polycarbonate Panel

Ultratek Worldwide Inc.
3801 N. Washington Blvd.
Gainesville, TX 76244
502-265-1000 (toll-free)

REV.	DESCRIPTION

CA #6762
WWW.MEAENGINEERS.COM
MEA
ENGINEERS, INC.
5808 Lewton Drive

DESIGN PRESSURE 60 PSF	Span(ft.)	4000 PSI CONCRETE	2000 PSI CONCRETE	HOLLOW BLOCK	WOOD
		1/4" FASTENERS	105	7	7
	86	9	8	6	5
	67	11	10	7	7
	48	11	11	10	9
3/8" FASTENERS	Span(ft.)				
	106	11	11	11	6
	86	11	11	11	7
	67	11	11	11	9
	48	11	11	11	11

DESIGN PRESSURE 50 PSF	Span(ft.)	4000 PSI CONCRETE	2000 PSI CONCRETE	HOLLOW BLOCK	WOOD
		1/4" FASTENERS	105	9	8
	86	10	9	7	6
	67	11	11	9	8
	48	11	11	11	10
3/8" FASTENERS	Span(ft.)				
	105	11	11	11	7
	86	11	11	11	8
	67	11	11	11	10
	48	11	11	11	11

DESIGN PRESSURE 40 PSF	Span(ft.)	4000 PSI CONCRETE	2000 PSI CONCRETE	HOLLOW BLOCK	WOOD
		1/4" FASTENERS	105	10	9
	86	11	11	8	7
	67	11	11	10	9
	48	11	11	11	11
3/8" FASTENERS	Span(ft.)				
	105	11	11	11	8
	86	11	11	11	10
	67	11	11	11	11
	48	11	11	11	11

DESIGN PRESSURE 30 PSF	Span(ft.)	4000 PSI CONCRETE	2000 PSI CONCRETE	HOLLOW BLOCK	WOOD
		1/4" FASTENERS	105	11	11
	86	11	11	10	9
	67	11	11	11	11
	48	11	11	11	11
3/8" FASTENERS	Span(ft.)				
	106	11	11	11	10
	86	11	11	11	11
	67	11	11	11	11
	48	11	11	11	11

Joseph A. S. Kaminich, Jr., P.E.
 License No. 47516
 State of Florida
 Date: 12/21/12

2010 FBG (NON-HIGH VELOCITY HURRICANE ZONE)

JK
 1-1-122
 NTS
 12/21/12
 5 of 5

CLEARTEK-INVISISHIELD
 Flat Polycarbonate Panel

Ultratek Worldwide Inc.
 3801 N. Washington Blvd.
 Dunwoody, GA 30246
 PHONE: (941) 594-2285

REV.	DESCRIPTION

CA #6782
 WWW.MEAENGINEERS.COM
MEA ENGINEERS, INC.
 8656 Lenton Drive
 Sarasota, Florida 34233
 TEL: 941-554-2000 FAX: 941-554-2000